

Fitting Instructions



SKU

PRODUCT

T7H722

TAG Heavy Duty Towbar to suit Holden Colorado (01/2012 - 12/2020)



Scan for latest version of these instructions

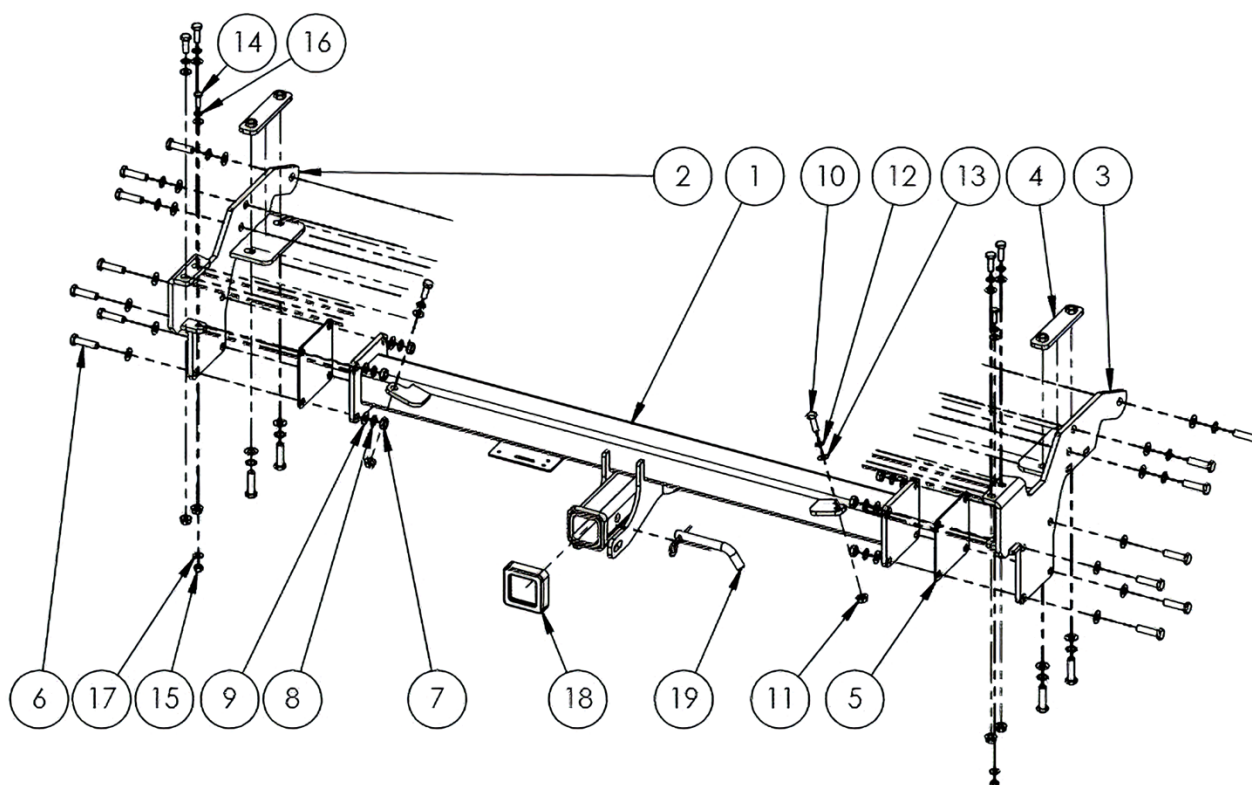
SPECIFICATIONS

- Towbar Class: Heavy Duty, Extended 3-Piece
- Towing Capacity: 3500kg

IN THIS GUIDE

- Fitment Instructions
- Torque Settings
- Warranty Info

Towbar Fitting Instructions



Required: Spanners/Sockets, Torque Wrench, Trim Removal Tools

| Kit Contents | | | | | |
|--------------|--------------------------|-----|----------|------------------------|-----|
| Item No. | Description | Qty | Item No. | Description | Qty |
| 1. | Towbar Centre Section | 1 | 12. | M10 Shake proof washer | 6 |
| 2. | End Plate Subassembly PS | 1 | 13. | M10 Flat Washer | 6 |
| 3. | End Plate Subassembly DS | 1 | 14. | M8x1.25x25 Bolts | 2 |
| 4. | Chassis Plate with Nuts | 2 | 15. | M8x1.25 Nuts | 2 |
| 5. | Spacer 3mm | 1 | 16. | M8 Shake Proof Washer | 2 |
| 6. | M12x1.25x45 Bolts | 18 | 17. | M8 Flat Washer | 4 |
| 7. | M12x1.25 Nuts | 8 | 18. | Hitch Collar Cover | 1 |
| 8. | M12 Shake Proof Washer | 18 | 19. | Pin and Clip | 1 |
| 9. | M12 Flat Washer | 26 | - | D-Shackles | 2 |
| 10. | M10x1.5x30 Bolt | 6 | - | Compliance Sticker | 1 |
| 11. | M10x1.5 Flange Nut | 6 | ... | ... | ... |

Step-By-Step Instructions

Warning:

- This product is for towing purposes only and must only be loaded as shown in your vehicle Owner's Manual.
- This towbar is NOT to be drilled, cut, welded, or modified in any way.
- Check behind chassis rail and body panels before drilling to ensure no hazards are present
- All load ratings shown are under the assumption your trailer has a functional braking system installed
- When installed in positions other than the one depicted in these instructions the Tow Ball Mount may interfere or obstruct certain features of your vehicle (tailgate opening, Chassis clearance, etc.)

General:

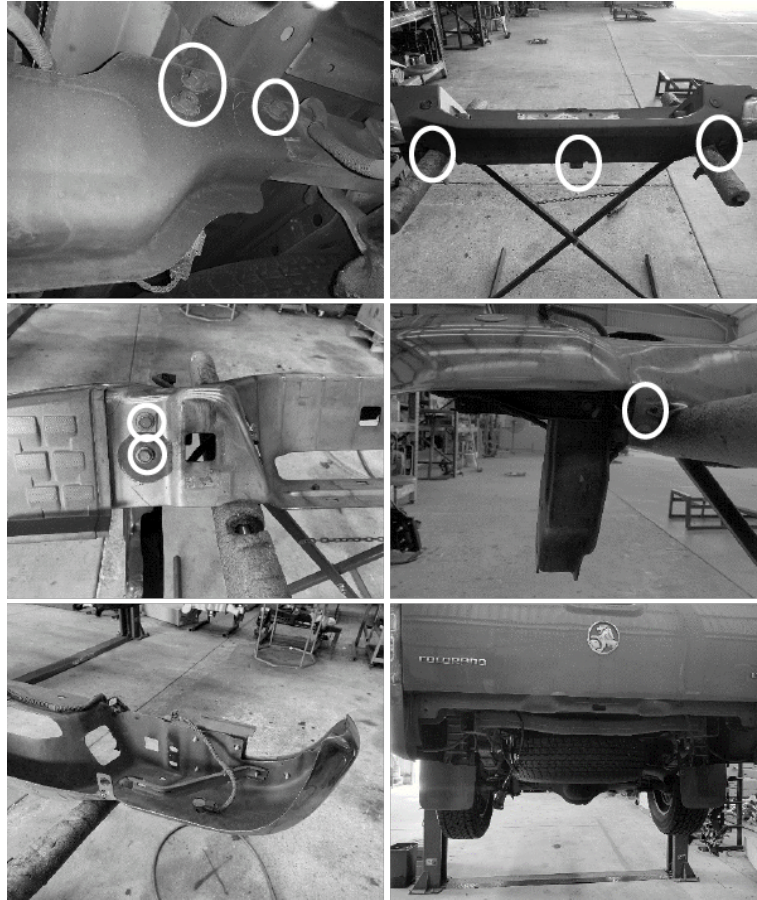
- Before fitting this towbar read fitting instructions and check installation hardware is correct.
- Check that the towbar is suitable for the vehicle and be wary of any changes to the vehicle design that may conflict with the fitting of this towbar.
- After drilling, blow any filings clear, remove any swarf and treat exposed metal with a rust inhibitor.
- If this vehicle requires a bumper cut out, please check to make sure that you measure twice and check twice before cutting any panels as some bumper profiles can change. If you are not sure, then please ask your towbar supplier

Towbar Fitting Instructions



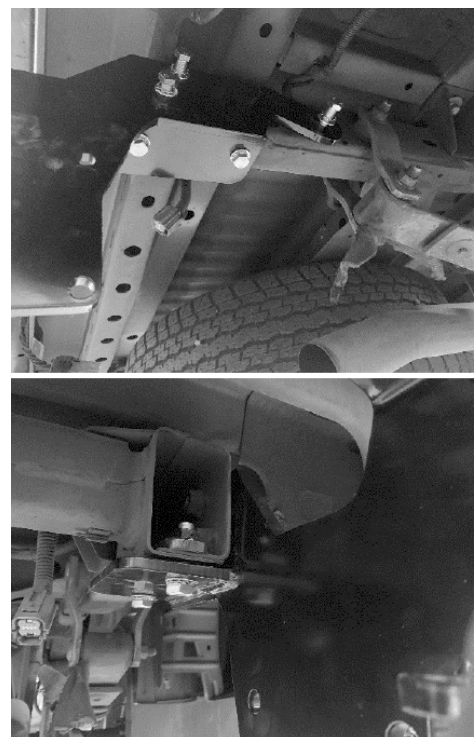
Step 1. Remove and Strip Rear Bumper/Step

- a. Unplug any wiring connected to the rear bumper. Remove 3x M12 bolts securing the bumper to the chassis on each side. With 2 people carefully supporting the bumper, slide it backwards and downwards to remove from the vehicle.
- b. Unscrew 3 screws on the lower edge of the plastic trim fixing it to the bumper (keep 2 of these). Ensure the number plate lights and 2 inner reverse sensors are unplugged. Carefully unclip the plastic trim from the bumper.
- c. Unbolt 3 bolts on each side to remove the bumper brackets from the bumper. Discard of the brackets and bolts. Leave the thinner angled bracket attached to the bumper.



Step 2. Fit Towbar End Plates

- a. Loosely secure both towbar end plates to the chassis.
 - Using 3x M12 Bolts, Flat and Shake Proof Washers into the captive nuts in the side of each chassis rail
 - Using 2x M12 Bolts, Flat and Shake Proof Washers and the Chassis Plate with Nuts through the holes in the bottom of each chassis rail.
- b. Tighten the bolts to hold the end plates against the chassis rails. DO NOT tighten to torque spec..

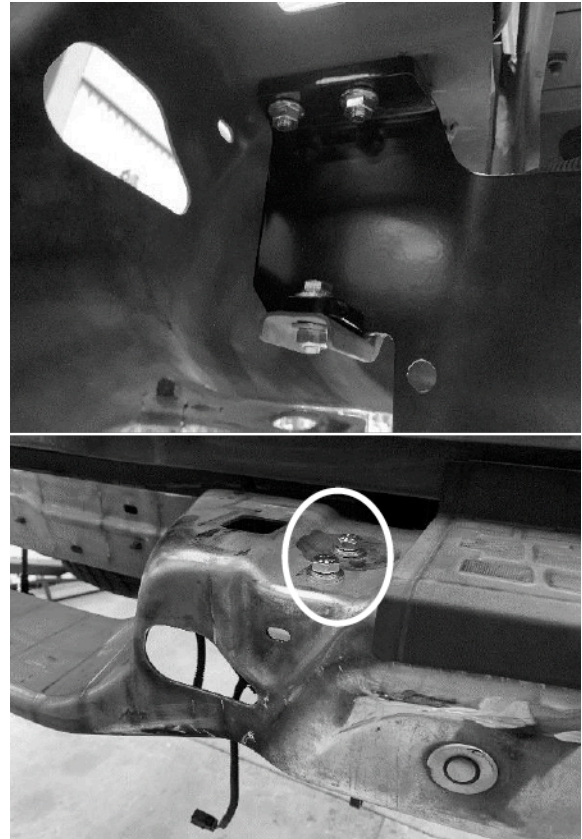


Towbar Fitting Instructions



Step 3. Refit Bumper Bar

- a. Carefully with 2 people, lift and slide rear bumper back onto the vehicle over the towbar end plates.
 - Use 2x M10 bolts, shake proof washers, flat washers and flange nuts to fix the bumper to each end plate through the top holes in the end plate. Ensure the bolt head is on the top side.
 - Use 1x M8 bolt, shake proof washer and nut and 2x flat washers to fix the bumper (thin angled bracket) to each end plate through the bottom holes in the end plate.



Step 4. Determine if Spacers are required

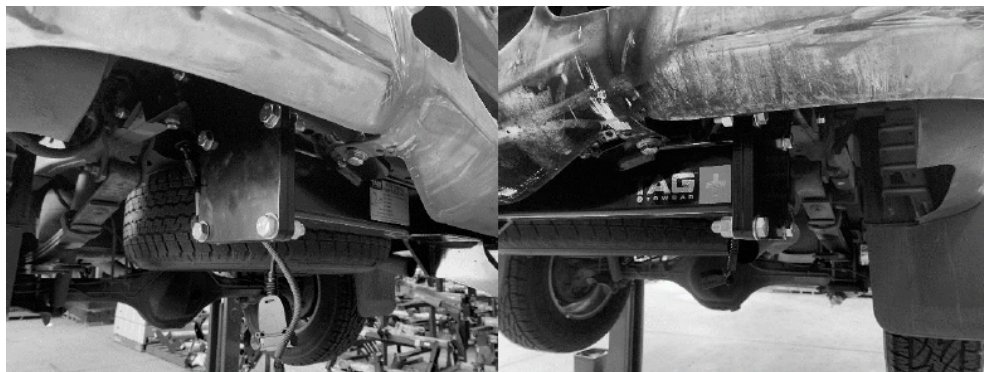
- a. Position the Towbar centre section between the two end plates.
 - If there is more than approx. 3mm clearance between the parts on each side, then spacers will be required.
 - If the clearance is less than this, spacers will not be required between the parts.



Towbar Fitting Instructions

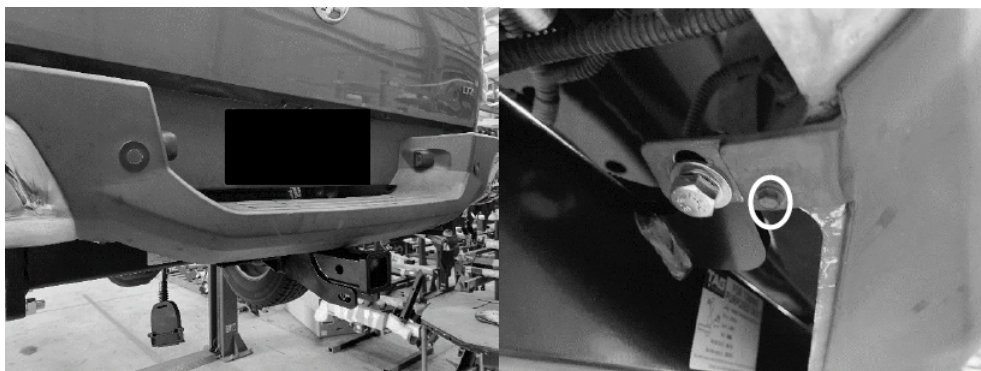


Step 5. Secure Towbar Centre Section and Fix to bumper



- a. Using 4x M12x45 Bolts, Shake Proof Washers and Bolts, 8x M12 Flat Washers, and 1x Spacer (if required) per side. Loosely secure the towbar centre section between the end plates. Ensure centre section is right side up with the hitch receiver bellow the main cross-bar.
- b. Also use 1x M10 Bolt, Shake proof washer, flat washer and flange nut each side to fix the bumper to the angled mounting point on the towbar centre section
- c. When all hardware is in place, tighten all bolts (including those into the chassis rails) to the torque specified.

Step 6. Refit bumper Bar Skin



- a. Clip plastic trim back on to the bumper using all the points removed in step 1.
- b. Fix the bottom edge of the bumper using 2 of the screws removed previously near the angled mounting points.
- c. Reconnect the number plate lights and reversing sensors and any wiring disconnected in step 1.

Towbar Fitting Instructions



Step 7. Apply Door Sticker

- a. Apply Towbar info label to the inside of the driver's side door jamb.



Torque table for bolt tightening

| Diameter | Pitch | Grade | Torque | Unit |
|----------|-------|-------|--------|------|
| M8 | 1.25 | 8.8 | 29 | Nm |
| M10 | 1.25 | 8.8 | 57 | Nm |
| M10 | 1.50 | 8.8 | 44 | Nm |
| M12 | 1.25 | 8.8 | 101 | Nm |
| M12 | 1.50 | 8.8 | 97 | Nm |
| M12 | 1.75 | 8.8 | 77 | Nm |
| M14 | 2.00 | 8.8 | 122 | Nm |
| M16 | 2.00 | 8.8 | 190 | Nm |

TAG Warranty Statement

SWD warrants your TAG Towbar for its full product life under the following conditions:

- You can show proof of purchase.
- The towbar has been correctly installed by a suitably qualified installer.
- The towbar has not been modified or abused in any way and has only been used for the intended purpose.
- The towbar was not fitted second hand to your vehicle.

The extent of this warranty includes materials and workmanship used in the manufacture of the towbar and is to the equivalent value of current, full replacement cost.

Nothing stated or implied in this warranty limits in any way, the statutory rights that you may have.

To make a claim visit the original installer in the first instance or, if you are unable to or are not satisfied with their help, then contact us direct by phone on 1300 669122 or visit www.swd.com.au