

# CROMMELINS PORTABLE CONCRETE VIBRATOR 45mm

---

## **OPERATION & INSTRUCTION MANUAL**

---

Thank you for your selection of a Crommelins Portable Concrete Vibrator. This Operation Manual explains its use, installation, checking and maintenance. We highly recommend that you retain this manual for reference regarding its proper handling.



Thank you very much for purchasing a Crommelin Portable Concrete Vibrator which can be used in construction, councils, hire industries and general use. This manual covers its operation and maintenance.

Please take a moment to familiarise yourself with the proper operation and maintenance procedures in order to maximise the safe and efficient use of this product.

Keep this owner's manual at hand, so that you can refer to it at anytime. Due to constant efforts to improve our products, certain procedures and specifications are subject to change without notice.

When ordering spare parts please have handy your products model number and serial number. Record these numbers in the boxes below for future reference - the location of these numbers vary depending on product.

<b>MODEL NO</b>														
<b>SERIAL NO</b>														

## CONTENTS

Introduction and Contents	2
Safety	3
Applications, Functions and Controls, Hazards	4
Assembly Guide	5
Operation and Specification Chart	6
Maintenance, Storage, PSA and Warranty	7
Trouble Shooting Guide	8
Parts Diagram	9
Parts List	10
Notes	11

## SAFETY

This manual contains important information on how to use the Crommelins Portable Concrete Vibrator 45mm, model number PV45HRN, correctly and safely. Please read through this manual before you attempt to operate the machine.

**This portable concrete vibrator is designed to give safe and dependable service if operated according to the instructions.**

- Always make a pre-operation inspection before starting the engine. (For more information read engine operation manual.)
- Only authorised and properly trained individuals should operate this piece of equipment. Never allow anyone to operate the unit without proper instructions.
- Operating and moving parts will cause injury if contacted. Ensure guards and safety devices are in place before this machine is operated.
- Children and pets must keep away from the area of operation at all times.
- You must know how to stop the engine quickly and understand the operation of all controls.
- Do not operate the machine near combustible materials or where fuel fumes have not been properly dispersed. Repair any fuel leaks immediately.
- Remove accumulated dust frequently from the air filter system.
- Lubricant levels should be checked regularly, refer to engine manual.
- Ensure the operating space is well ventilated. Avoid operating the machine in a closed room, tunnel or other poorly ventilated places, as the exhaust fumes contain deadly poisonous carbon monoxide. If the machine is unavoidably operated in such a place, discharge the exhaust outside the room by a suitable means.
- Mufflers and other hot parts are dangerous. Do not touch them with hands or any other body parts.
- Stop engine without fail before replenishing fuel tank. Never replenish fuel while the engine is running or remains hot otherwise spilled or evaporated fuel is liable to catch fire from the engine spark or muffler heat. Wipe off spilled fuel before starting engine.
- Observe the following cautions when transporting. Close the fuel tank cap securely during transportation. Drain petrol from the fuel tank before transporting over a long distance or on rough roads.
- Operating personnel should be equipped with proper safety protection. To prevent injury wear the following protective items: Ear plugs, safety glasses, work boots and any other protective item required by job conditions.



## APPLICATIONS

- Piers, pre-cast beams, foundations, stairs, walls, floors, slabs, panels, floor stumps, footings and fence posts.

## FUNCTIONS & CONTROLS

- The machine is controlled by an ON/OFF switch and a throttle lever.
- The engine is 4-stroke, only use unleaded petrol.

## MECHANICAL HAZARDS

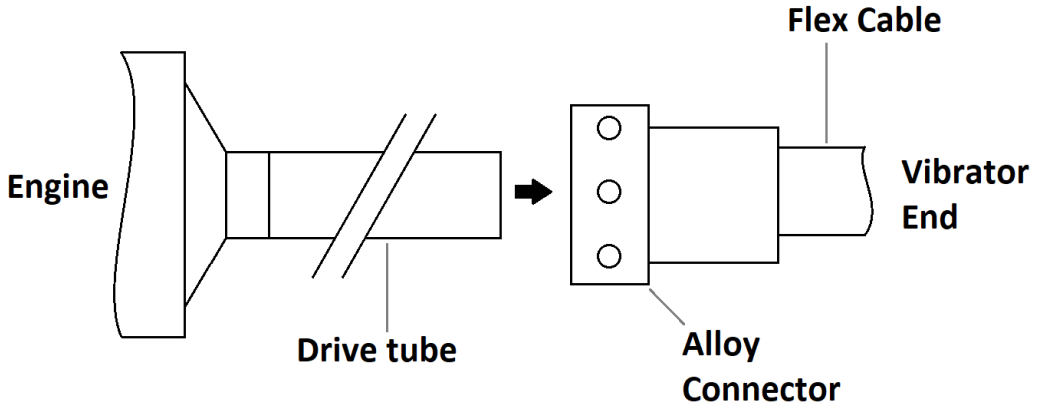
- Do not operate the machine unless all protective guards are in place.
- Keep hands and feet clear of rotating and moving parts to avoid injury.
- Ensure that the motor is in the OFF position and the spark plug lead is disconnected before removing the guards or making adjustments.
- Do not leave the machine with the engine running, while it is unattended.
- Exercise care when operating the unit. Exposure to vibration or repetitive work may be harmful to hands and arms.
- Do not hold the vibrator shaft while in operation. Hold the unit with both hands on the handles provided and use the shoulder strap to help support the unit.
- Never stand or place your foot on the vibrator head while in operation.
- Ensure that any repairs to the motor and machine are carried out by an authorised service agent.

## NOISE HAZARDS

- Excessive noise can lead to temporary or permanent loss of hearing.
- Wear an approved hearing protection device to limit noise exposure, as required by occupational health and safety regulations.

## ADDITIONAL HAZARDS

- Slips, trips and falls are a major cause of serious injury or death.
- Avoid loss of balance by starting the unit on a flat, level surface and only pick up when it is idling.
- Beware of uneven or slippery work surfaces.
- Exercise care when working in the vicinity of unprotected holes or excavations.



- To fit the two parts of the portable vibrator together, lay both parts on a flat surface.
- Remove centre cap-screw from aluminium connector and loosen the other two screws
- Locate drive tube into the connector and push together. If they don't push fully together rotate one part to locate square drive on the end of the shaft to the square hole in the alloy connector.
- Push fully home and align the hole in the tube with the cap-screw hole. Refit the cap-screw and tighten, then tighten the other two bolts.

## OPERATION

- To start the machine place it on a flat level surface and turn the engine switch to ON.
- Move the choke lever to the closed position.
- Press the priming pump until fuel is seen in the fuel tube. See engine user manual.
- Pull the starter slowly until resistance is felt, pull briskly to start but do not pull out the recoil rope to the end. Return the starter grip to the normal position.
- Open the choke lever as the engine warms up.
- Operate the unit at high speed to ensure the clutch is engaged and the correct compaction is achieved.
- Avoid sharp bends when in use or damage to the flex shaft could result.
- Do not use as an external vibrator or leave running for extended periods out of the concrete as the unit needs to be immersed in the wet concrete to remain cool.

## ENGINE

The engine user manual is enclosed.

## PORTABLE CONCRETE VIBRATORS SPECIFICATION CHART

MODEL	PV45HRN
Shaft Size	45mm
Frequency	9000vpm
Engine Make	Honda
Engine	1.3hp GX35
Starting System	Recoil start
Engine Features	4-stroke OHV
Fuel Type	Petrol
Fuel Tank	0.65L
Noise Level	93dB at 1m
Weight	11kg
Manufacturer's Warranty	Two years
Engine Warranty	Refer to Honda

## MAINTENANCE

When assembling, lubricating or adjusting any part of the machine, make sure to stop the engine and disconnect the spark plug wire. Service the engine according to the engine manufacturer's specifications. Refer to the engine operation and maintenance manual.

### Maintenance: Every 8 hours or daily

- Check for loose bolts and nuts, retighten if necessary.
- Check and clean the air filter element, re-lube the element according to engine manufacturer's recommendations. If operating conditions are unusually dusty and severe, filter elements cleaning should be done more frequently.
- Check oil level in crankcase and replenish as necessary.

## FUEL & LUBRICANT

FUEL	ENGINE OIL
Unleaded petrol	10W-30 (Refer to engine user manual.)

## STORAGE

- Make sure that the engine is completely cooled off before storage.
- Clean up oil and dust accumulation on rubber parts.
- Cover the machine and store it in a dry place.
- For long-term storage of unit, remove fuel from the fuel tank.

## PSA SHEET

We have Product Safety Assessment Sheets for all Crommelins Machinery products. If you require one due to work site policies and procedures or for your own reference please go to [www.crommelins.com.au](http://www.crommelins.com.au) to locate your product and download the relevant document.

## WARRANTY

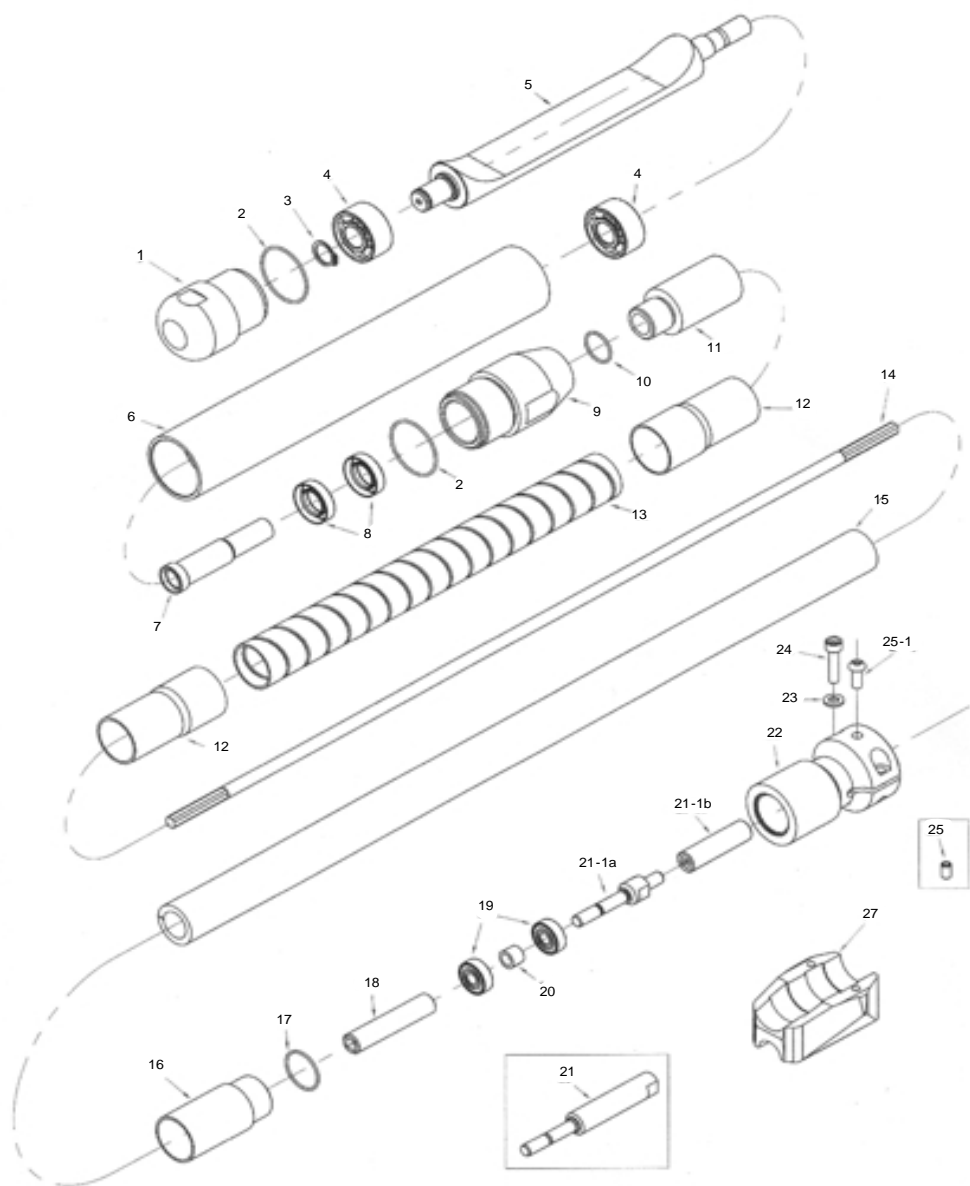
Consult the Crommelins Machinery warranty information leaflet, supplied with your new product, for full details of your machinery warranty including consumer advice and information about accessing a service agent to repair your product. You can also visit our website at [www.crommelins.com.au](http://www.crommelins.com.au) to find your local service agent who will be able to assist with all warranty claims.

## TROUBLE SHOOTING GUIDE

PROBLEM	CAUSE	SOLUTION
Engine won't start, or stops suddenly	<ol style="list-style-type: none"><li data-bbox="337 193 624 252">1. Engine switch set to 'OFF'</li><li data-bbox="337 288 454 316">2. No fuel</li><li data-bbox="337 352 512 411">3. Spark plug is carbonized</li></ol>	<ol style="list-style-type: none"><li data-bbox="654 193 900 220">1. Turn switch to 'ON'</li><li data-bbox="654 288 759 316">2. Refuel</li><li data-bbox="654 352 964 411">3. Clean the spark plug or replace it with a new one</li></ol>
Engine runs, but does not get up to operating speed	<ol style="list-style-type: none"><li data-bbox="337 517 497 544">1. Choke 'ON'</li><li data-bbox="337 580 589 639">2. Air cleaner element dirty</li><li data-bbox="337 778 605 805">3. Lack of engine power</li><li data-bbox="337 842 600 869">4. Binding tool or cable</li><li data-bbox="337 906 477 933">5. Stale fuel</li></ol>	<ol style="list-style-type: none"><li data-bbox="654 517 885 544">1. Choke lever 'OFF'</li><li data-bbox="654 580 1003 735">2. Dismantle the air cleaner, remove element and clean with proper solvent (see the engine manual for further information)</li><li data-bbox="654 778 992 805">3. Refer to the engine manual</li><li data-bbox="654 842 992 869">4. Return to dealer for service</li><li data-bbox="654 906 1003 965">5. Empty fuel tank of stale fuel then refill with clean fuel</li></ol>



# PARTS DIAGRAM



## PARTS LIST

Item No.	Part No.	Part Description	Qty	AIP	Rem.
1	7365-001	End cap	1		
2	4908-15036	O-ring 1.5x36	2		
3	4900-00015	Circlip #A15	1		
4	4000-03202	Bearing 3202	2		
5	7365-003	Rotor Shaft	1		
6	7365-002	Barrel	1		
7	7365-004	Rotor connector	1		
8	4701-16287	Oil seal TC 16x28x7	2		
9	7365-005	Oil seal holder	1		
10	4908-15019	O-ring 1.5x19	1		
11	7365-006	Front end casing	1		
12	4921-00131	Spring liner clamp	2		
13	4921-00130	Spring liner	1		
14	4914-40806	Flexible shaft	1		
15	4915-12806	Outer casing	1		
16	7365-009	Back end casing	1		
17	4908-15025	O-ring 1.5x25	1		
18	7365-010	Flexible connector	1		
19	4002-00608	Bearing 608 2RS	2		
20	7365-011	Spacer	1		
21	7365-012	Shaft connector	1	21	*A
21-1a	7365-014	Connector joint	1	01	
21-1b	7010-015	Connector	1	01	*B
22	7365-013	Split connector	1		
23	4913-10006	Spring washer M6	2		
24	4411-06025	Cap screw M6x25L	2		
25	4451-06010	Set screw M6x10L	1	10	
25-1	4481-06016	Button head cap screw M6x16L	1	00	
26	7365-050	Mounting block	1		
-	4931-00530	Lubricant Oil	20ml		
-	4931-50707	Grease	6ml		





CROMMELINS PORTABLE CONCRETE  
VIBRATOR 45mm

---

**OPERATION & INSTRUCTION MANUAL**

---