

0

1

2

3

4

5

6

7

8

9

THIS ELECTRICAL DRAWING CONSISTS OF THE FOLLOWING SHEETS	
Description	
SHEET	
IN	INDEX
LI	ELECTRICAL COMPONENTS LIBRARY
01	ENGINE CONNECTIONS FOR VERSIONS STD, RSS, IPP, HUK, IPP+HM, HNV+IPP
02	ENGINE CONNECTIONS FOR VERSIONS CONN
03	POWER CONNECTIONS FOR VERSION SINGLE PHASE STD, RSS, CONN
04	POWER CONNECTIONS FOR VERSION SINGLE PHASE HUK
05	POWER CONNECTIONS FOR VERSION SINGLE PHASE IPP
06	VERSION SINGLE PHASE DESERT + ENGINE CONNECTION
07	POWER CONNECTIONS FOR VERSION AMF
08	POWER CONNECTIONS FOR VERSION THREE PHASE STD, RSS, CONN
09	POWER CONNECTIONS FOR VERSION THREE PHASE IPP, IPP+HM, HNV+IPP

**WIRING DIAGRAM FOR S/DF6500 - 6000
INDEX**

GE0486

Date: 07/09/2011 Pag: IN

Author: F. Gori

Rev04	///	////	Rev08	///	////
Rev03	23/11/2012	Key Switch Substitution from Deltasystem to Cobopag 1-2-6) L.Pratelli	Rev07	///	////
Rev02	19/03/2012	Connection modified on Relay na start, Relay nc stop and Relay na cb-ev (pag 2) L.Pratelli	Rev06	///	////
Rev01	25/11/2011	Added the OI guard, with engine stop pages 1 and 2 - M.P.	Rev05	///	////

0	1	2	3	4	5	6	7	8	9		
	GENERADOR GENERATOR GENERATORE GENERATOR 發電機		ALTERNADOR CARGA BATERIA BATTERY CHARGER GENERATORE CARICO BATERIA CHARGEUR BATTERIE BATTERIE CHARGER 電池充電器		CONTACTO TERMICO THERMAL SWITCH SCATTO TERMICO DECLENCHEUR THERMIQUE THERMAL SWITCH 保溫開關		CONMUTADOR SWITCH SELETTORE COMBINAITEUR SWITCH 開關		TRANSFORMADOR TRANSFORMER TRANSFORMATORE TRANSFORMATEUR TRANSFORMER 變壓器		TRANSFORMADOR DE CORRIENTE CURRENT TRANSFORMER TRANSFORMATORE DI CORRENTE TRANSFORMATEUR DE COURANT AKTUELLE TRANSFORMET 電流變壓器
	BATERIA BATTERY BATTERIA BATTERIE BATTERIE 電池		TIERRA EARTH TERRA TERRE ERDE 地線		CONTACTO DE POTENCIA POWER SWITCH CONTATTO DI POTENZA CONTATORE CONTACT DI PUISSANCE POWER SWITCH 電力開關		BLOQUEO MECANICO MECHANICAL BLOCK INTERBLOCCO MECANICO BLOQUE MECANIQUE MECHANISCHE BLOCK 物理限制裝置		PROTECCION TERMICA THERMAL GUARD PROTEZIONE TERMICA THERMIQUE EN GARDE THERMISCHE GUARD 保溫裝置		RESISTENCIA RESISTOR RESISTENZA RESISTANCE RESISTOR 電阻
	GENERATOR EARTH MASSA GENERATORE MASSE GENERATEUR GENERATOR ERDE 發電機地線		CONEXIÓN CONNECTION CONNESSIONE JOINTAGE ANSCHLUSS 連接		BORNERO TERMINAL MORSETTO BORNE TERMINAL 接頭板		FUSIBLE FUSE FUSIBILE FUSIBLE SICHERUNG 保險絲		PRECALENTAMIENTO PRE-HEATING SCALDIGLIA PRE - CHAUFFAGE PRE - HEIZUNG 加熱器		TRANSDUCTOR DE NIVEL LEVEL TRANSDUCER TRASDUTTORE DI LEVELLO TRANSDUCTEUR DE NIVEAU LEVEL TRANSDUCER 燃料水平變換器
	ENCHUFE PLUG PRESA PLOT PLUG		ACTUADOR ACTUATOR ATTUATORE ACTIONNEUR ANTRIEB 促動器		ELECTROVALVULA ELECTRO VALVE ELETTRVALVOLA ELECTRO-VANNE ELEKTRO VENTIL 電子閥		SENSOR DE VELOCIDAD SPEED SENSOR PICK-UP SENSEUR DE VITESSE SPEED SENSOR 速度感應器		TRANSDUCTOR DE TEMPERATURA TEMPERATURE TRANSDUCER TRASDUTTORE DI TEMPERATURA TRANSDUCTEUR DE TEMPERATURE TEMPERATUR TRANSDUCER 溫度變換器		TRANSDUCTOR DE PRESION PRESSURE TRANSDUCER TRASDUTTORE DI PRESSIONE TRANSDUCTEUR DE PRESSION PRESSURE TRANSDUCER 壓力變換器
	BOMBA PUMP POMPA POMPE PUMP 泵		ALARMA ALARM ALLARME SIRENE ALARME 警報器		DIODO DIODE DIODO DIODE DIODE 兩極真空管		LED LED LED LED LED 發光二極管		MOTOR DE ARRANQUE STARTER MOTOR MOTORINO D'AVVIAMENTO MOTEUR DE DEPART STARTER MOTOR 起動馬達		TOROIDAL TOROID TORE TOROIDE TOROID
	CABLE ARMADO SHIELDED CABLE CAVO SCHEMATO CABLE AVEC BLINDAGE SHIELDED CABLE 受保護的電纜		CONTACTO NA NA CONTACT CONTATTO NA CONTACT NA NA KONTAKT N/A 接觸器		BOBINA RELÉ-CONTACTOR RELAY-CONTACTOR COIL BOBINA RELÉ-CONTATTORE BOBINE RELAIS-CONTACTEUR RELAIS SPULE SCHUTZ 繼電器		AMPERIMETRO AMP METER AMPEROMETRO AMPEROMETRE AMP METER 電流計		PIN PIN PIN PIN PIN 針		CONTINUA EN PAGINA X COLUMNA Y CONTINUES IN PAGE X, COLUMN Y CONTINUA NELLA PAG. X, Y COLONNA CONTINUE A LA PAGE X, Y COLONNE WEITERHIN AUF DER SEITEX, Y SPALTE 繼續在一輯U+201C第十欄y
	CONTACTO NC NC CONTACT CONTATTO NC CONTACT NC NC KONTAKT NC 接觸器		CONTACTO CON CAMBIO EXCHANGE CONTACT CONTATTO IN SCAMBIO CONTACT DE ECHANGE AUSTAUSCH KONTAKT 調換接觸器		VOLTIMETRO VOLT METER VOLTMETRO VOLTMETRE VOLT METER 電壓計		FRECUENCI METRO FREQUENCY METER FREQUENZIMETRO FREQUENCY METER FREQUENCY METER 頻率計		RED MAINS RETTE		NIVEL DE COMBUSTIBLE FUEL LEVEL GAUGE LIVELLO DI GASSOLEO INDICATER DE NIVEAU DE CARBURANT KRAFTSTOFF EBENE 燃油液位計
	CONTACTOS CON FLOTADOR FLOAT CONTACT CONTATTO CON GALLEGIANTE CONTACT DE FLUTTEUR FLOAT KONTAKT 浮動接觸器		CONTACTO DE PRESIÓN PRESSURE CONTACT CONTATTO PRESSOSTATO PRESSOSTAT DRUCK KONTAKT 壓力接觸器		CUENTAHORAS HOURS METER CONTADRE COMPTE HEURES HOURS METER 計時器		CUENTAVUELTAS REVOLUTION COUNTER CONTAGIRI COMPTE-TOURS REVOLUTION COUNTER 旋轉計算器		CARGA LOAD CARICO		CONMUTADOR VOLTIMETRICO VOLTAGE SWITCH
	THERMAL CONTACT TERMOSTATO CONTACT DE TEMPERATURE THERMISCHE KONTAKT 保溫接觸器		CONTACTO DE FLUJO FLOW CONTACT FLUSSOSTATO CONTACT DE FLUX FLOW KONTAKT 流量接觸器		MANÓMETRO ACEITE OIL GAUGE MANOMETRO OLIO MANOMETRE HUILE OIL GAUGE 油錶		MANÓMETRO TPA. AGUA TEMPERATURE GAUGE TERMOSTATO ACQUA THERMOMETRE EAU TEMPERATURE GAUGE 溫度錶		CONMUTADOR AMPERIMETRICO AMPERIMETRIC SWITCH		CONTADOR KW/H KW/h COUNTER

**WIRING DIAGRAM FOR S/DF6500 - 6000
LIBRARY**

GE0486

Date: 07/09/2011

Pag: LI

Autor: F. Gori

Rev04

///

///

Rev03

23/11/2012

Key Switch Substitution from Deltasystem to Cobopag 1-2-6) L.Pratelli

Rev02

19/03/2012

Connection modified on Relay na start, Relay nc stop and Relay na cb-ev (pag 2) L.Pratelli

Rev01

25/11/2011

Added the OI guard, with engine stop pages 1 and 2 - M.P.

Rev08

///

///

Rev07

///

///

Rev06

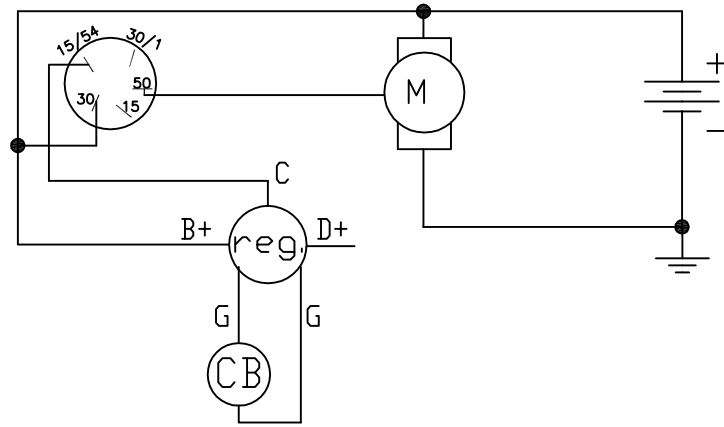
///

///

Rev05

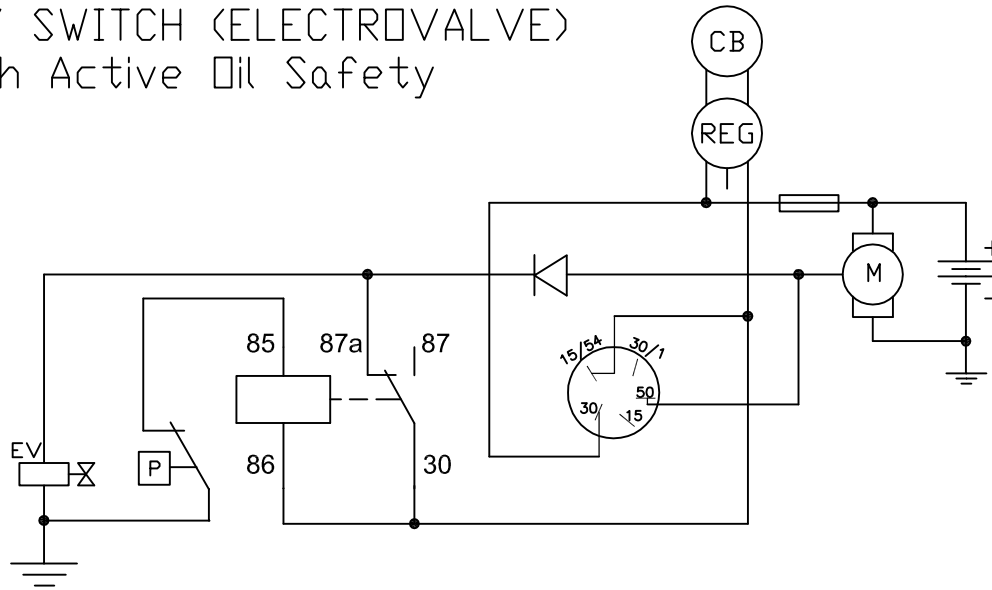
///

///



KEY SWITCH

KEY SWITCH (ELECTROVALVE)
With Active Oil Safety



KEY SWITCH	KEY SWITCH+EV
STD	IPP
RSS	HNV
HUK	

RIF. REF.	COLORE	COLOR
BK	NERO	BLACK
WH	BIANCO	WHITE
RD	ROSSO	RED
YE	GIALLO	YELLOW
BN	MARRONE	BROWN
GY	GRIGIO	GRAY
OG	ARANCIONE	ORANGE
BU	BLU	BLUE
GN	VERDE	GREEN
PK	ROSA	PINK
VT	VIOLA	VIOLET

WIRING DIAGRAM FOR S/DF6500 - 6000

ENGINE CONNECTIONS FOR VERSIONS STD, RSS, IPP, HUK, IPP+HM, HNV+IPP

GE0486

Date: 07/09/2011 Pag: 1
Autor: F. Gori

Rev04	///	///	Rev08	///	///
Rev03	23/11/2012	Key Switch Substitution from Deltasystem to Cobopag 1-2-6) L.Pratelli	Rev07	///	///
Rev02	19/03/2012	Connection modified on Relay na start, Relay no stop and Relay na cb-ev (pag 2) L.Pratelli	Rev06	///	///
Rev01	25/11/2011	Added the Oil guard, with engine stop pages 1 and 2 - M.P.	Rev05	///	///

0

1

2

3

4

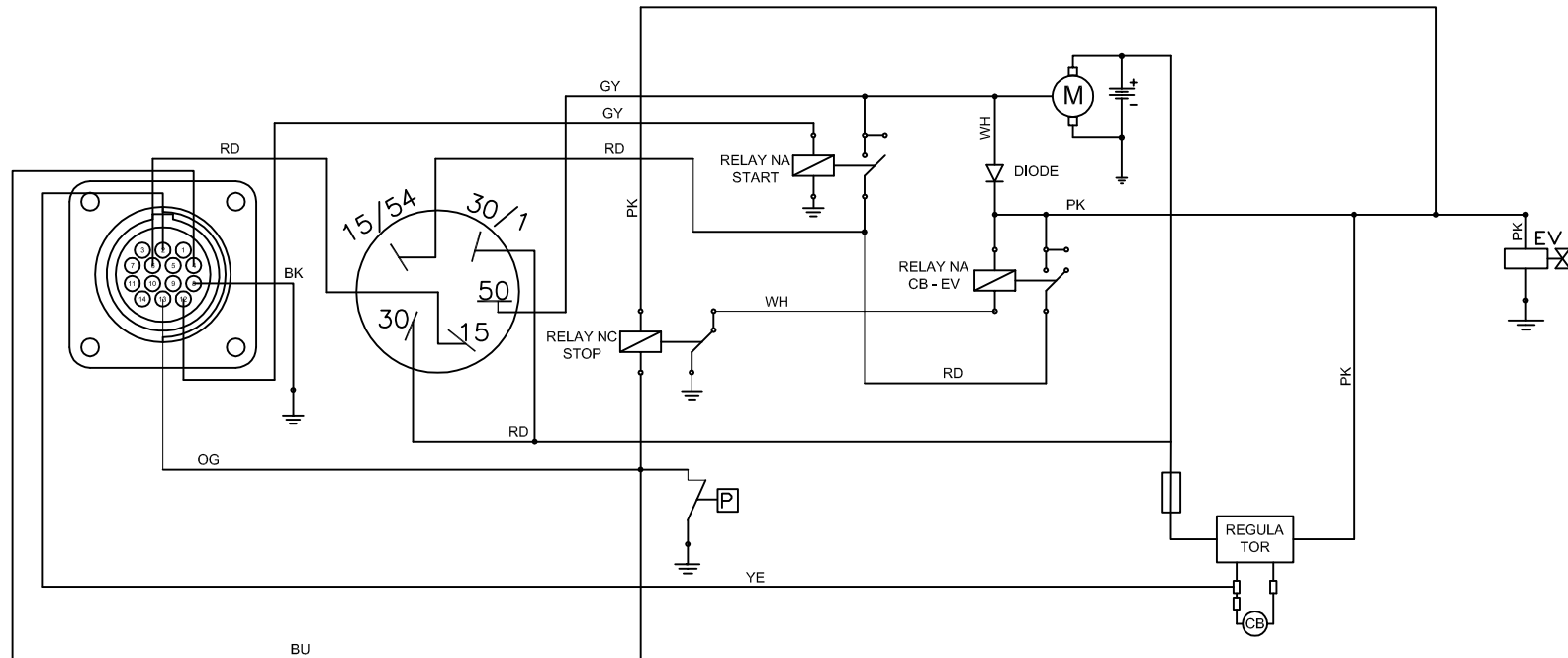
5

6

7

8

9



RIF. REF.	COLORE	COLOR
BK	NERO	BLACK
WH	BIANCO	WHITE
RD	ROSSO	RED
YE	GIALLO	YELLOW
BN	MARRONE	BROWN
GY	GRIGIO	GRAY
OG	ARANCIONE	ORANGE
BU	BLU	BLUE
GN	VERDE	GREEN
PK	ROSA	PINK
VT	VIOLA	VIOLET

CONN. 14 POLES	AMF	RSS		COLOUR
1 --	--	--	--	--
2 D+ (12V)	--	IN	12V	YELLOW
3 + B x (EV or BC SUPPLY)	OUT	--	12V	PINK
4 OIL ALARM	IN	--	0V	BLUE
5 --	--	IN	230V	BROWN
6 + BATT. (UNDER KEY SWITCH)	--	IN	12V	RED
7 --	--	--	--	--
8 - BATTERY	IN	IN	0V	BLACK
9 ALARM FUEL	IN	--	0V	WHITE
10 ALARM TEMPERATURE	IN	--	0V	YELLOW
11 CHOKE	OUT	OUT	12V	PINK
12 START	OUT	OUT	12V	GREY
13 STOP	OUT	OUT	0V	ORANGE
14 --	--	--	--	--

**WIRING DIAGRAM FOR S/DF6500 - 6000
ENGINE CONNECTION FOR VERSIONS WITH CONN**

GE0486

Date: 07/09/2011 Page: 2

Autore: F. Gori

Rev04

////

////

Rev08

////

////

Rev03

23/11/2012

Key Switch Substitution from Deltasystem to Cobopag 1-2-6) L.Pratelli

Rev07

////

////

Rev02

19/03/2012

Connection modified on Relay na start, Relay nc stop and Relay na cb-ev (pag 2) L.Pratelli

Rev06

////

////

Rev01

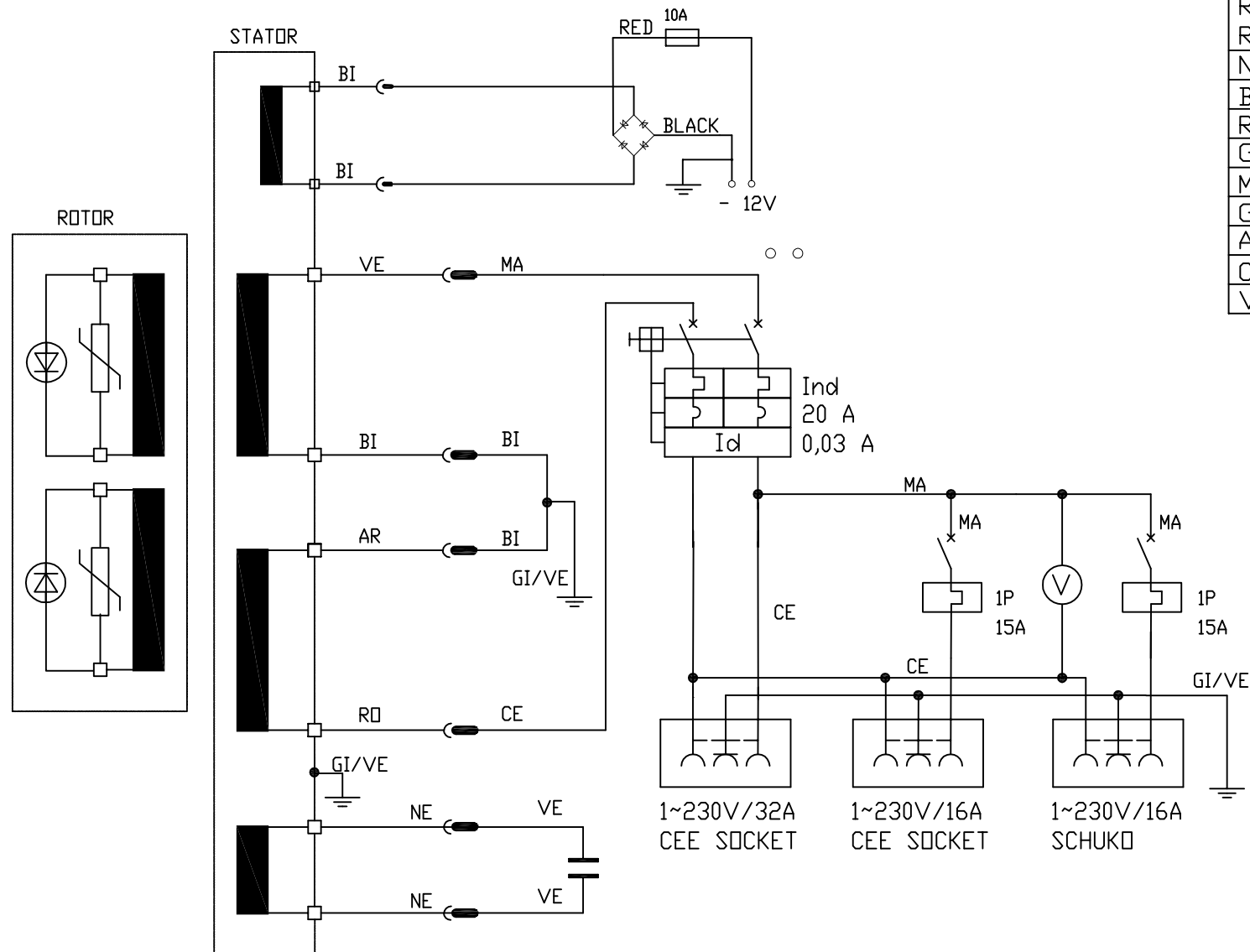
25/11/2011

Added the Oil guard, with engine stop pages 1 and 2 - M.P.

Rev05

////

////



RIF. REF.	COLORE	COLOR
NE	NERO	BLACK
BI	BIANCO	WHITE
RO	ROSSO	RED
GI	GIALLO	YELLOW
MA	MARRONE	BROWN
GR	GRIGIO	GRAY
AR	ARANCIONE	ORANGE
CE	CELESTE	LIGHTBLUE
VE	VERDE	GREEN

WIRING DIAGRAM FOR S/DF6500 - 6000
POWER CONNECTIONS FOR VERSION SINGLE PHASE STD,
RSS, CONN

GE0486

Date: 07/09/2011

Pag: 3

Autor: F. Gori

Rev04

////

////

Rev03

23/11/2012

Key Switch Substitution from Deltasystem to Cobopag 1-2-6) L.Pratelli

Rev02

19/03/2012

Connection modified on Relay na start, Relay nc stop and Relay na cb-ev (pag 2) L.Pratelli

Rev01

25/11/2011

Added the OI guard, with engine stop pages 1 and 2 - M.P.

Rev08

////

////

Rev07

////

////

Rev06

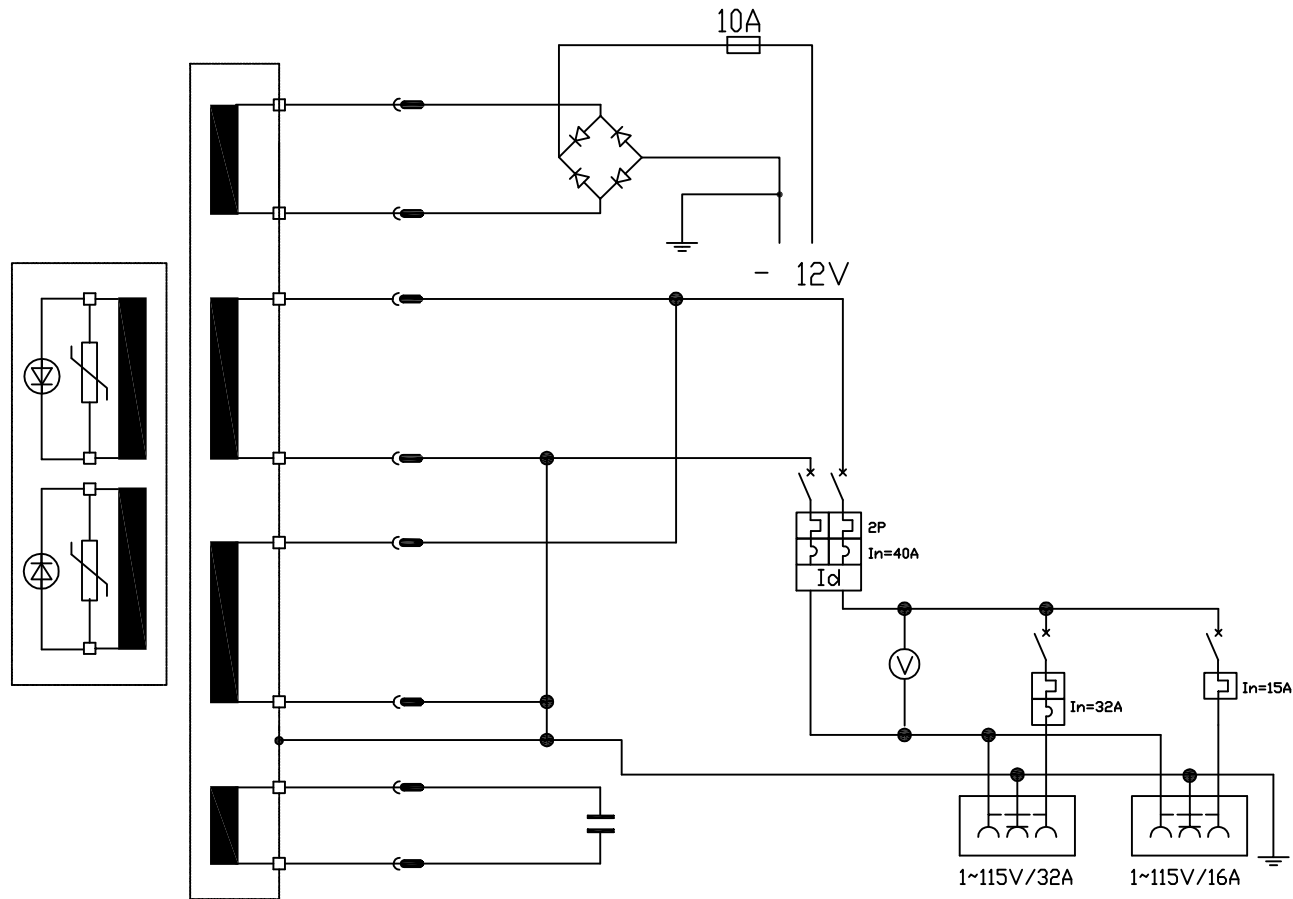
////

////

Rev05

////

////



RIF. REF.	COLORE	COLOR
BK	NERO	BLACK
WH	BIANCO	WHITE
RD	ROSSO	RED
YE	GIALLO	YELLOW
BN	MARRONE	BROWN
GY	GRIGIO	GRAY
OG	ARANCIONE	ORANGE
BU	BLU	BLUE
GN	VERDE	GREEN
PK	ROSA	PINK
VT	VIOLA	VIOLET

WIRING DIAGRAM FOR S/DF6500 - 6000

POWER CONNECTIONS FOR VERSION SINGLE PHASE HUK

GE0486

Date: 07/09/2011

Pag: 4

Autor: F. Gori

Rev04

////

////

Rev03

23/11/2012

Key Switch Substitution from Deltasystem to Cobopag 1-2-6) L.Pratelli

Rev02

19/03/2012

Connection modified on Relay na start, Relay nc stop and Relay na cb-ev (pag 2) L.Pratelli

Rev01

25/11/2011

Added the OI guard, with engine stop pages 1 and 2 - M.P.

Rev08

////

////

Rev07

////

////

Rev06

////

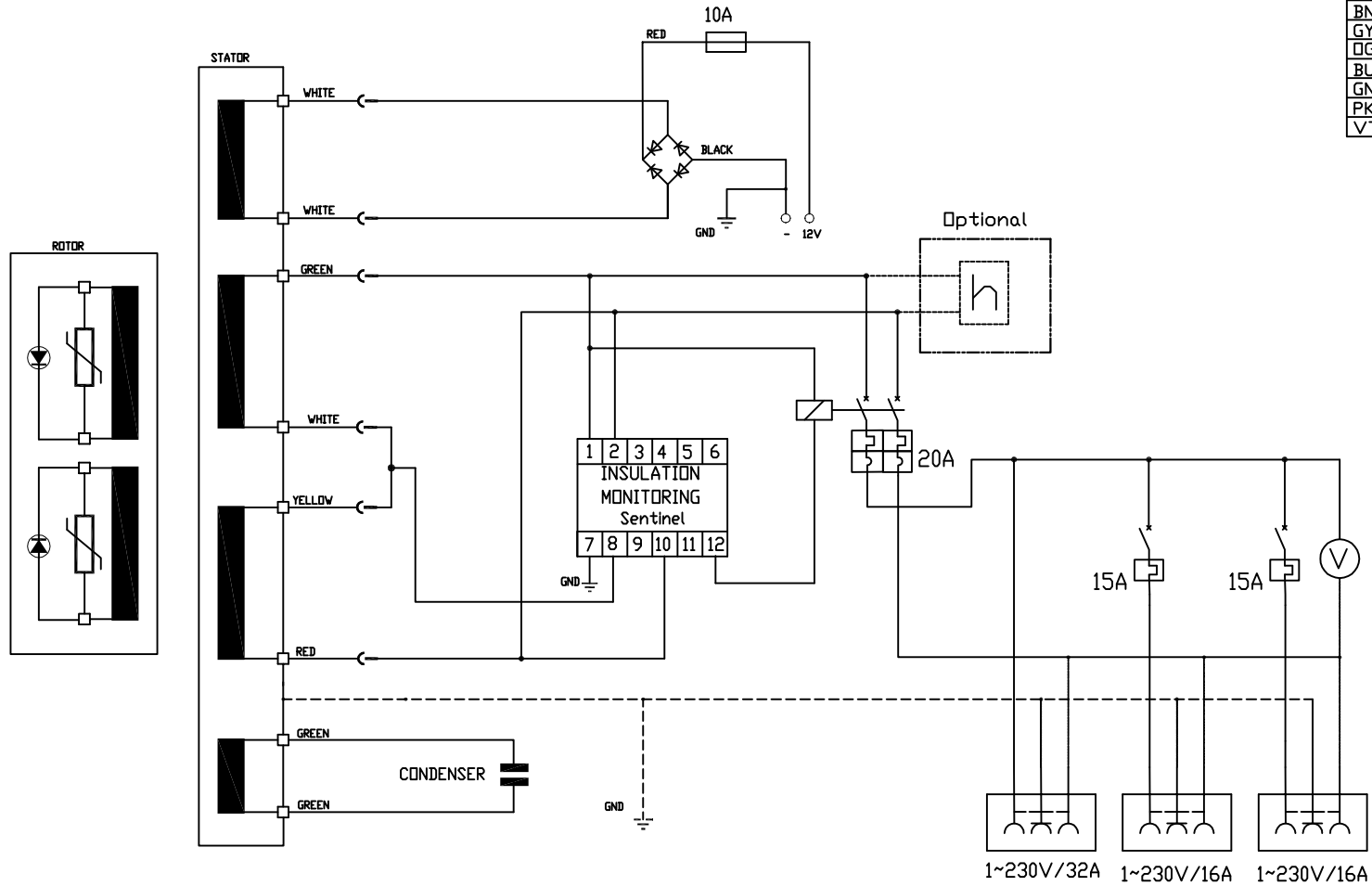
////

Rev05

////

////

RIF. REF.	COLORE	COLOR
BK	NERO	BLACK
WH	BIANCO	WHITE
RD	ROSSO	RED
YE	GIALLO	YELLOW
BN	MARRONE	BROWN
GY	GRIGIO	GRAY
OG	ARANCIONE	ORANGE
BU	BLU	BLUE
GN	VERDE	GREEN
PK	ROSA	PINK
VT	VIOLA	VIOLET



WIRING DIAGRAM FOR S/DF6500 - 6000

POWER CONNECTIONS FOR VERSION SINGLE PHASE IPP

GE0486

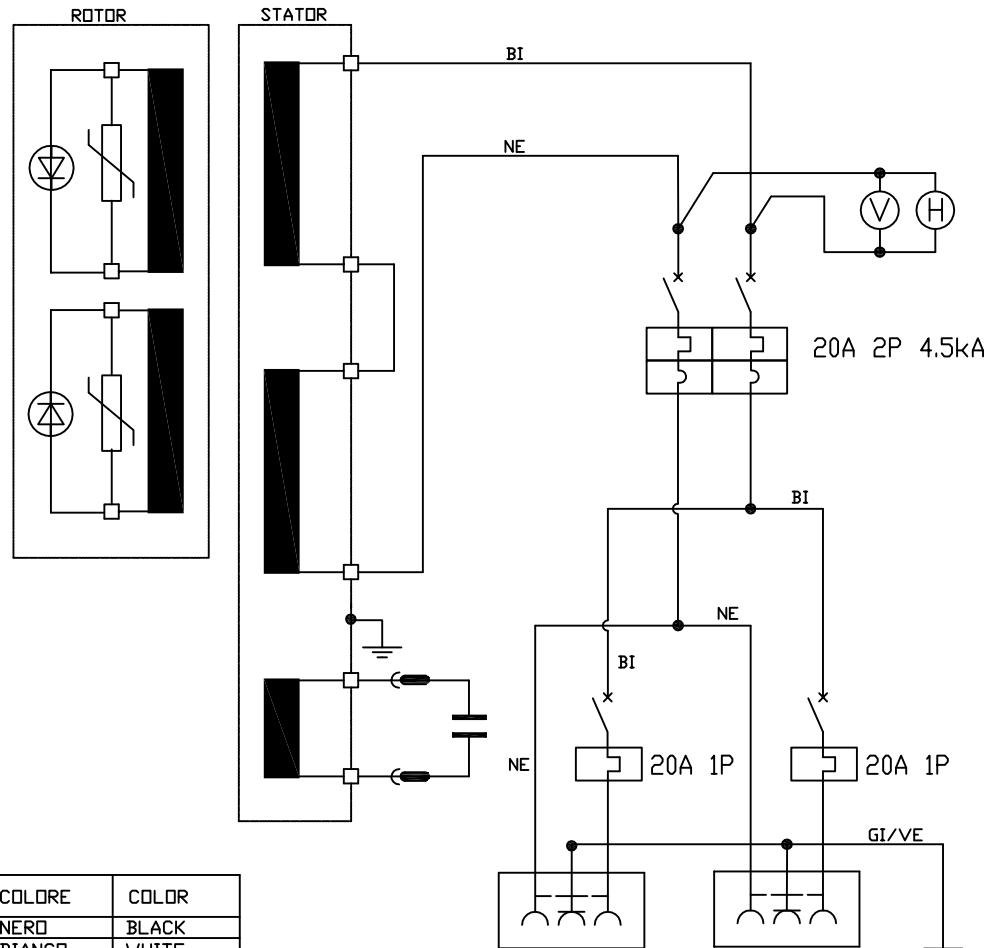
Date: 07/09/2011 Pag: 5
 Autor: F. Gori

Rev04	///	///
Rev03	23/11/2012	Key Switch Substitution from Deltasystem to Cobopag 1-2-6) L.Pratelli
Rev02	19/03/2012	Connection modified on Relay na start, Relay nc stop and Relay na cb-ev (pag 2) L.Pratelli
Rev01	25/11/2011	Added the Oil guard, with engine stop pages 1 and 2 - M.P.

Rev08	///	///
Rev07	///	///
Rev06	///	///
Rev05	///	///

POWER CONNECTIONS

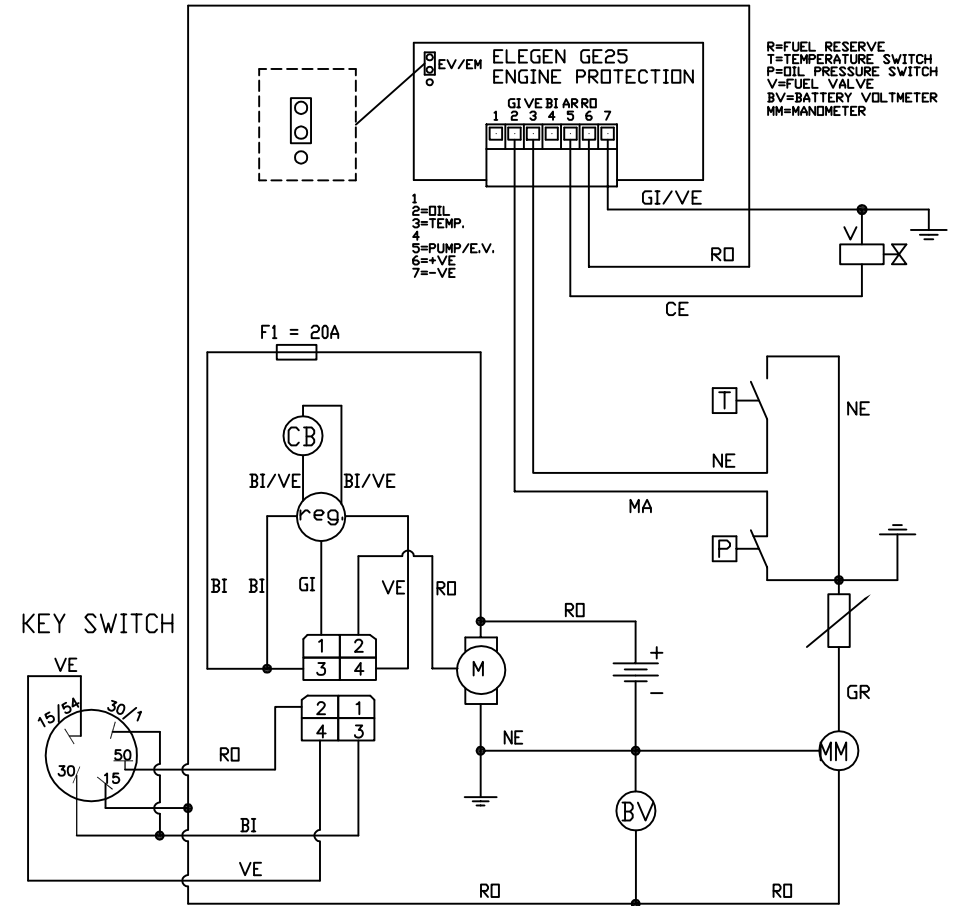
ENGINE CONNECTION



PRESA 20A UNIVERSALE
20A UNIVERSAL RECEPTACLE

PRESA 20A UNIVERSALE
20A UNIVERSAL RECEPTACLE

RIF. REF.	COLORE	COLOR
BK	NERO	BLACK
WH	BIANCO	WHITE
RD	ROSSO	RED
YE	GIALLO	YELLOW
BN	MARRONE	BROWN
GY	GRIGIO	GRAY
OG	ARANCIONE	ORANGE
BU	BLU	BLUE
GN	VERDE	GREEN
PK	ROSA	PINK
VT	VIOLA	VIOLET



WIRING DIAGRAM FOR S/DF6500 - 6000

VERSION SINGLE PHASE DESERT + ENGINE CONNECTION

GE0486

Date: 07/09/2011

Pag: 6

Rev04

///

///

Rev08

///

///

Rev03

23/11/2012

Key Switch Substitution from Deltasystem to Cobopag 1-2-6) L.Pratelli

Rev07

///

///

Rev02

19/03/2012

Connection modified on Relay na start, Relay nc stop and Relay na cb-ev (pag 2) L.Pratelli

Rev06

///

///

Rev01

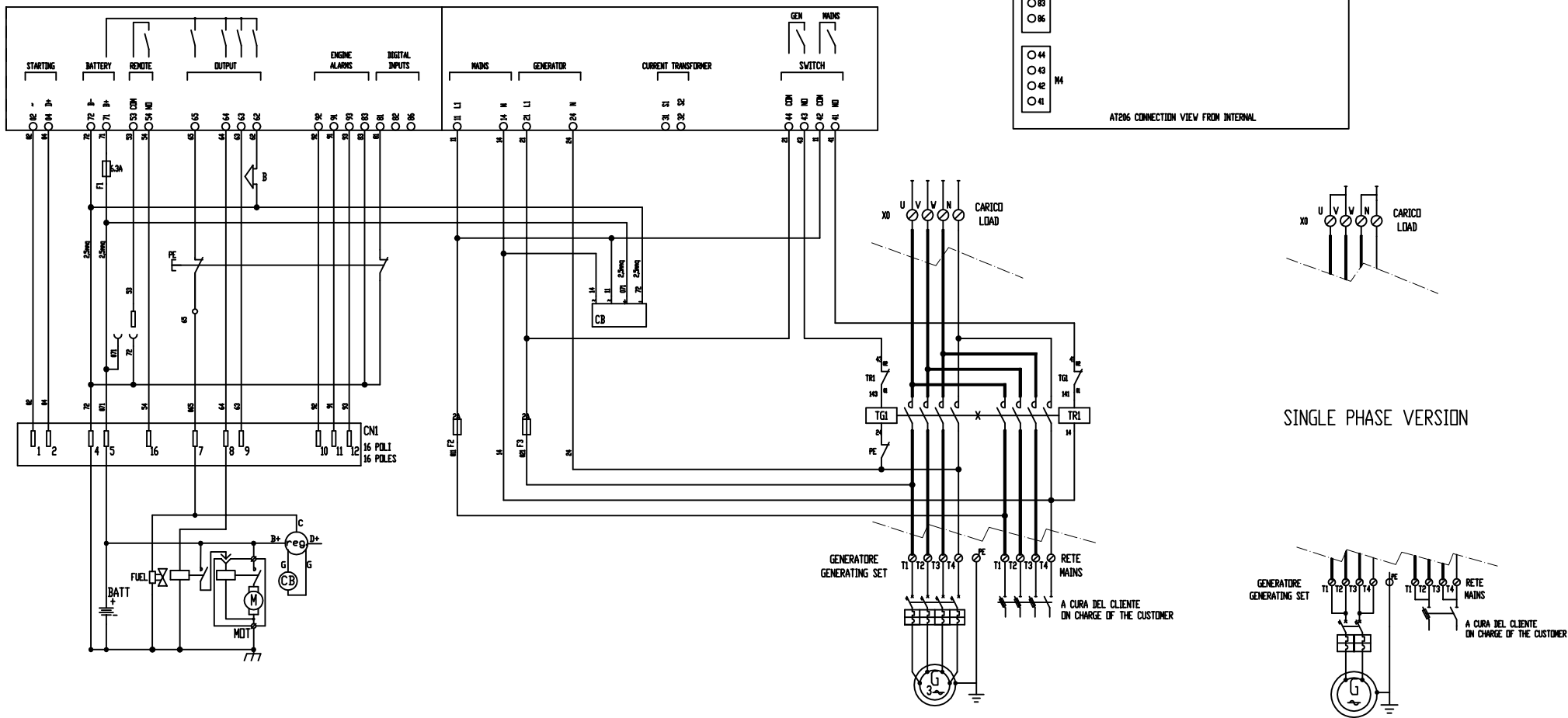
25/11/2011

Added the Oil guard, with engine stop pages 1 and 2 - M.P.

Rev05

///

///



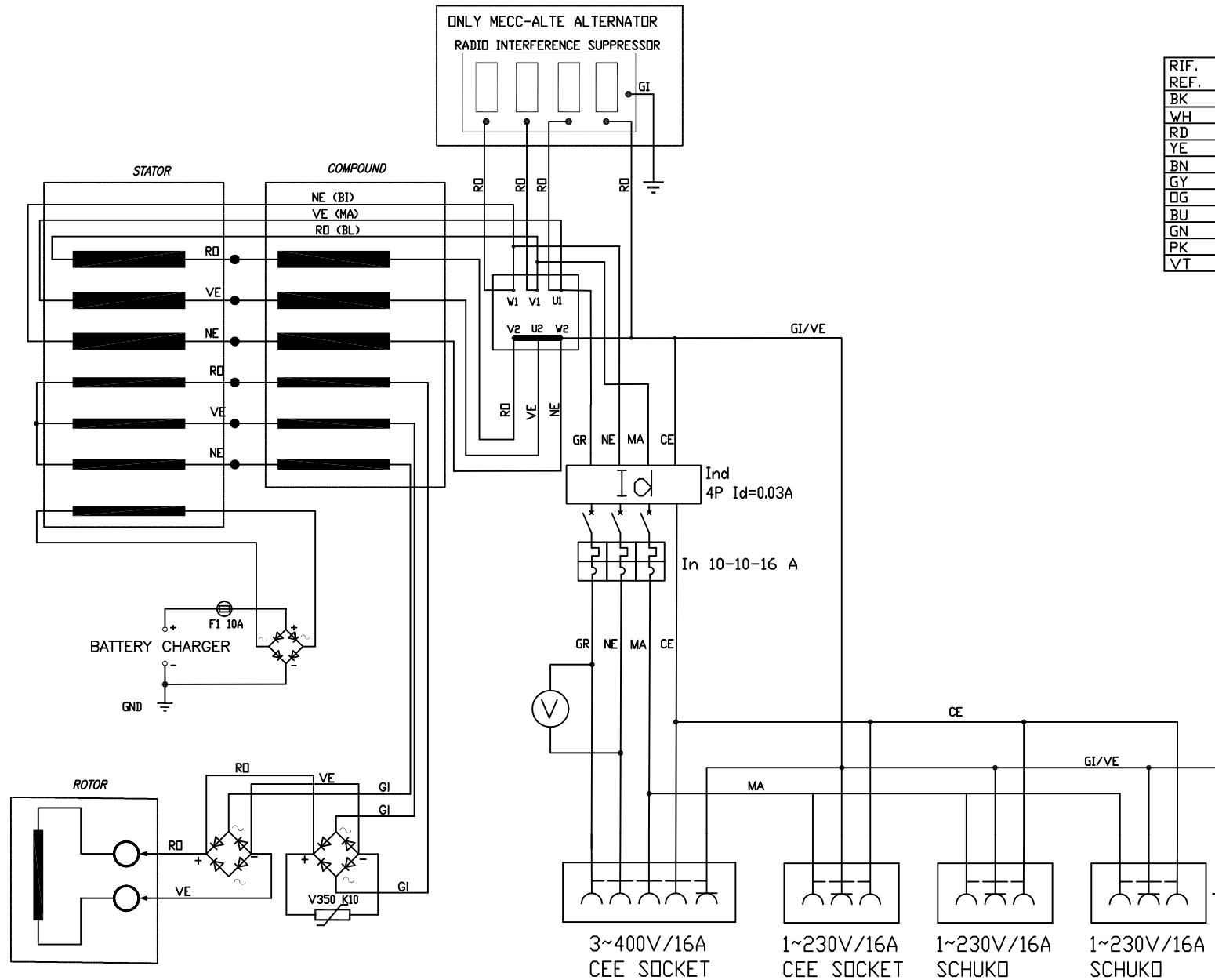
**WIRING DIAGRAM FOR S/DF6500 - 6000
POWER CONNECTIONS FOR VERSION AMF**

GE0486

Date: 07/09/2011 Pag: 7
Autor: F. Gori

Rev04	////	////
Rev03	23/11/2012	Key Switch Substitution from Dettasystem to Cobopag 1-2-6) L.Prate!!!
Rev02	19/03/2012	Connexion modified on Relay no start, Relay nc stop and Relay na cb-ev (pag 2) L.Prate!!!
Rev01	25/11/2011	Added the Oil guard, with engine stop pages 1 and 2 - M.P.

Rev08	////	////
Rev07	////	////
Rev06	////	////
Rev05	////	////



**WIRING DIAGRAM FOR S/DF6500 - 6000
POWER CONNECTIONS FOR VERSION THREE PHASE STD,
RSS, CONN**

GE0486

Date: 07/09/2011

Pag: 8

Autor: F. Gori

Rev04

////

////

Rev03

23/11/2012 Key Switch Substitution from Deltasystem to Cobopag 1-2-6) L.Pratelli

Rev02

19/03/2012 Connection modified on Relay na start, Relay nc stop and Relay na cb-ev (pag 2) L.Pratelli

Rev01

25/11/2011 Added the OI guard, with engine stop pages 1 and 2 - M.P.

Rev08

////

////

Rev07

////

////

Rev06

////

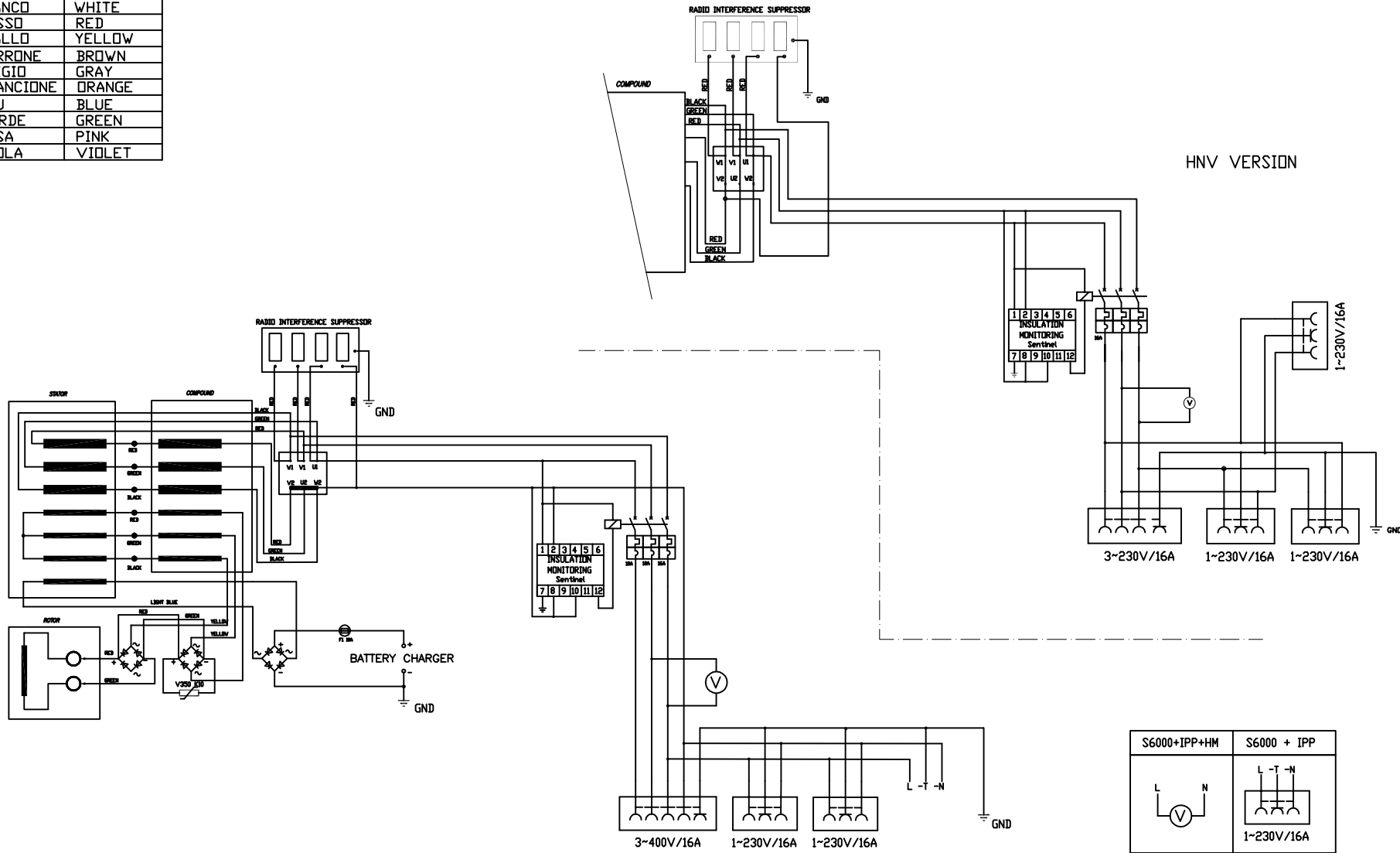
////

Rev05

////

////

RIF. REF.	COLORE	COLOR
BK	NERO	BLACK
WH	BIANCO	WHITE
RD	ROSSO	RED
YE	GIALLO	YELLOW
BN	MARRONE	BROWN
GY	GRIGIO	GRAY
OG	ARANCIONE	ORANGE
BU	BLU	BLUE
GN	VERDE	GREEN
PK	ROSA	PINK
VT	VIOLA	VIOLET



**WIRING DIAGRAM FOR S/DF6500 - 6000
POWER CONNECTIONS FOR VERSION THREE PHASE IPP,
IPP+HM, HNV+IPP**

GE0486

Date: 07/09/2011 Pag: 9
Autor: F. Gori

Rev04	////	////
Rev03	23/11/2012	Key Switch Substitution from Dettasystem to Cobop (pag 1-2-6) L.Pratelli
Rev02	19/03/2012	Connection modified on Relay na start, Relay nc stop and Relay na cb-ev (pag 2) L.Pratelli
Rev01	25/11/2011	Added the OI guard, with engine stop pages 1 and 2 - M.P.

Rev08	////	////
Rev07	////	////
Rev06	////	////
Rev05	////	////

